



# Project Planning

Computer Science 309 Dashboard

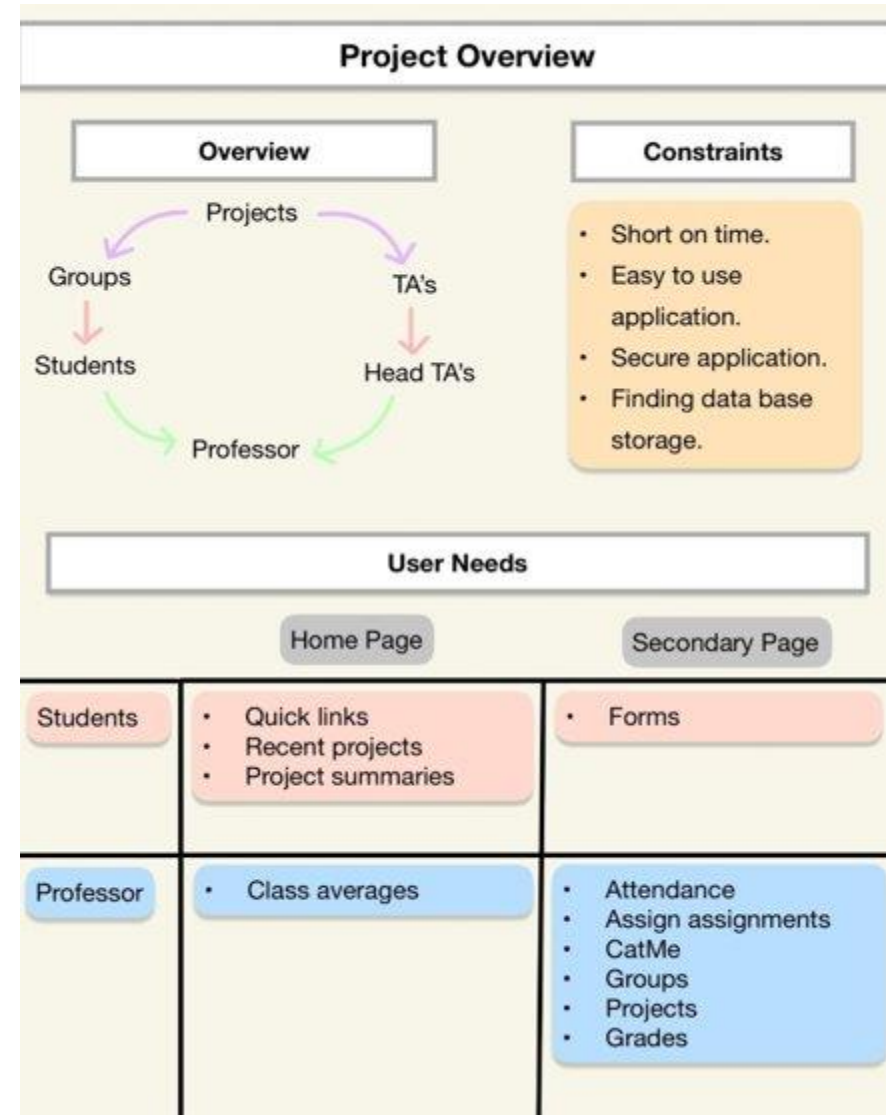
Team 14: Bradley Gaines, Breckin Bartels, Kat  
Christofferson, Ria Patel, Thomas Payton & Varun Jain



# Project Overview

# Project Overview

- Project: Computer Science 309 Dashboard
- Advisor: Dr. Simanta Mitra
- Client: Dr. Simanta Mitra
- Goal: Create a platform that gathers, analyzes, and portrays data from numerous applications used in the course including, Canvas, CATme, Gitlab, etc.
- Special Features: Once the application is in motion, we will add attendance, ABET, and other features!



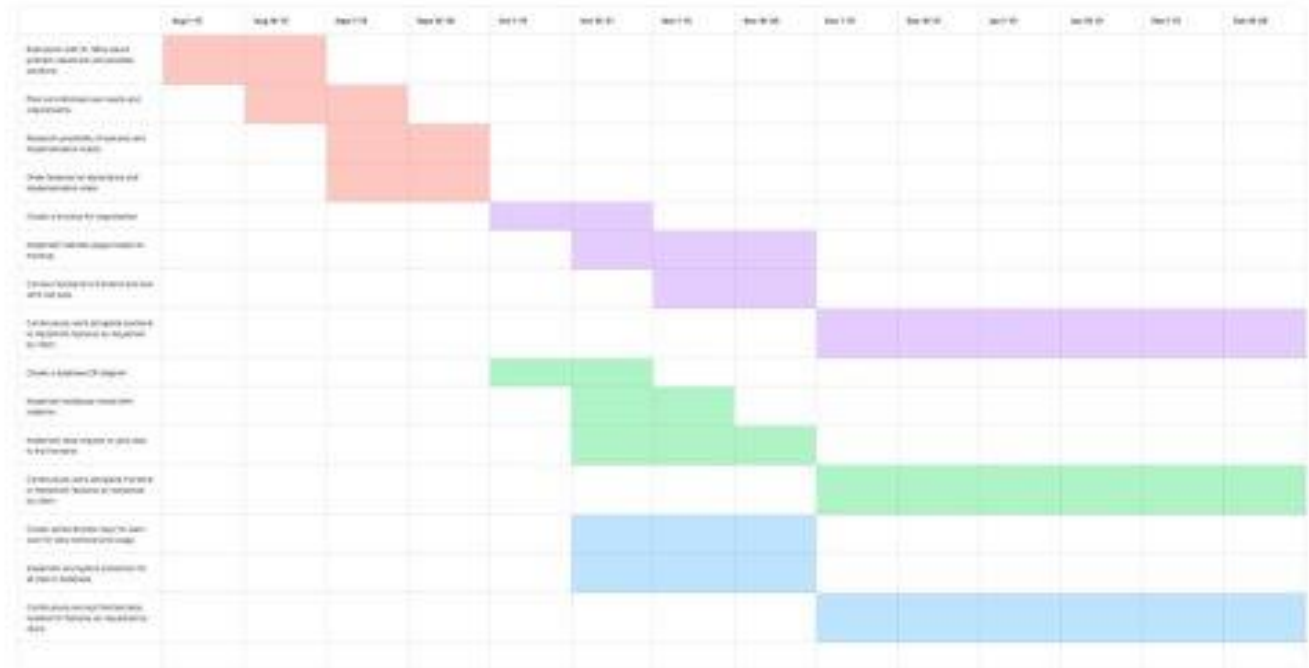


# Project Management

# Project Statement

- Hybrid management style:
  - Waterfall:
    - Scheduled order of tasks to start i.e. design frontend, design backend, implement frontend, implement backend, implement security.
  - Agile:
    - Regular feedback from original implementation.
    - One semester of test run with continuous improvements.

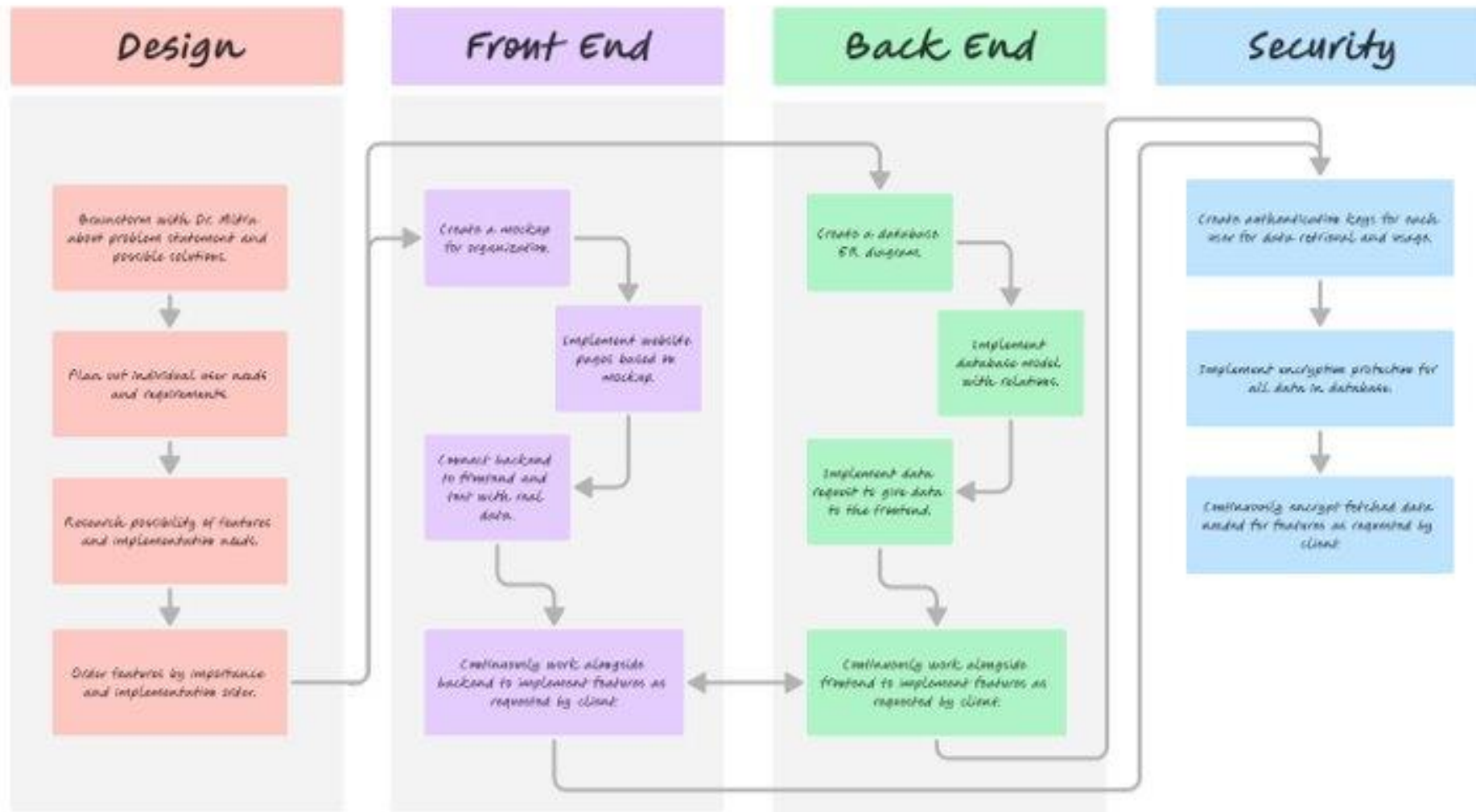
Gantt Chart





# Task Decomposition

# Task Decomposition





# Key Milestones



# Requirements

Section	Requirements
Frontend	<ul style="list-style-type: none"><li>• Figma mockup with desired features.</li><li>• Screen flow diagram.</li><li>• Implement pages.</li></ul>
Backend	<ul style="list-style-type: none"><li>• ER diagram.</li><li>• Tables.</li><li>• Implement tables.</li><li>• Connect backend to frontend.</li></ul>
Security	<ul style="list-style-type: none"><li>• Data encryption.</li><li>• Accessibility keys.</li><li>• Login capabilities.</li></ul>
Overall	<ul style="list-style-type: none"><li>• Schematics.</li><li>• Implementation.</li><li>• First draft of application.</li><li>• Final draft of application.</li></ul>



# Key Risks

# Key Risks

Section	Risk
Frontend	<ul style="list-style-type: none"><li>• Privacy.</li><li>• Easy usability.</li></ul>
Backend	<ul style="list-style-type: none"><li>• Tables.</li><li>• Data analysis.</li></ul>
Security	<ul style="list-style-type: none"><li>• Data encryption.</li><li>• Academic data fetching.</li></ul>
Overall	<ul style="list-style-type: none"><li>• Different views.</li><li>• Future adaptations.</li></ul>



# Conclusions

- Users include Professors, Teaching Assistants, and students.
- All class information, resources, and assignments will be available in one location.
- Professor will be able to analyze class data in coordination with ABET requirements.
- Stronger organization of course materials for storage.
- Project is a hybrid of waterfall and agile management.
- Key milestones include designing, implementing, and adjusting.
- Key risks include privacy, accessibility, and data encryption.